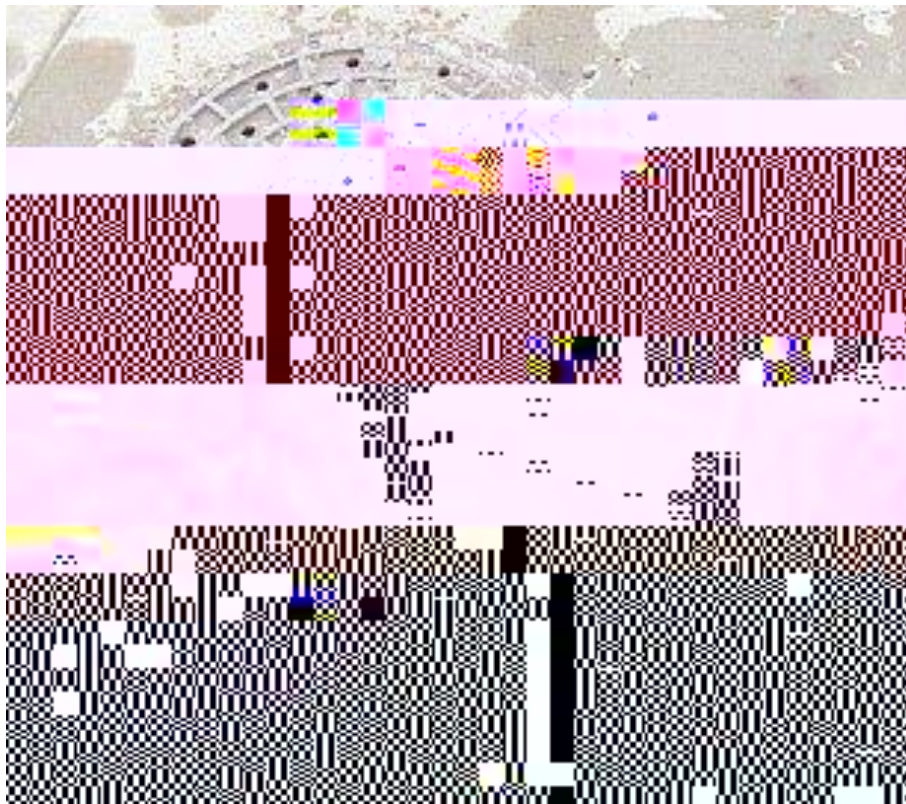


# Roger Williams University Confined Space Entry Policy



Roger Williams University  
Dept. of Environmental Health and Safety  
One Old Ferry Road  
Bristol, RI 02809

Adopted April



## **Roger Williams University Confined Space Entry Policy**

### **I. Introduction**

Roger Williams University (RWU) has a number of confined spaces on campus. OSHA defines a confined space in 29 CFR 1910.146 as a space:

- An employee may bodily enter and perform work;
- With a limited or restricted means of entry / exit; and
- Not designed for continuous employee occupancy.

Examples on the RWU campus include: sewer lines, telecommunications wires and cables, and domestic water lines all accessed via manholes, sewer pump pits, sprinkler pits, and water meter pits.

(PRCS). A PRCS meets one or more of the following criteria:

- Contains, or could potentially contain, a hazardous atmosphere;
- Contains a material that has the potential for engulfing an entrant;
- Has an internal configuration where an entrant could be trapped or asphyxiated by inwardly converging walls or downward-sloping floors with a tapering cross-section; and / or;
- Contains any other recognized serious safety or health hazard.



- a. Confirm that the weather conditions are acceptable for entry (the pop-up tent may be used to provide shelter over the confined space if necessary) and that the grounds around the entrance are stable and in good condition to support the retrieval system.
  - b. Confirm that seasonal concerns will not interfere with a safe entry (i.e., snow, heat/cold, insects, muddy / icy ground near the confined space entrance, etc.).
  - c. Use traffic controls if the entrance is in a roadway (cones, barriers, flagger, etc.).
- 4.



the task safely and compliantly. The attendant may never enter the confined space, so if a second person is needed in the confined space, the entry team needs to have at least three members. If miscellaneous aboveground tasks would monitor the entrant (monitoring an aboveground panel, providing traffic control, fetching tools and equipment, etc.), then entry team needs to have at least three members, with the third member performing these miscellaneous tasks. The third member does not need to have confined space entry training, provided that they only perform these miscellaneous tasks (traffic control, fetching equipment, etc.) and do not perform any of the tasks listed in confined space entry team job duty descriptions listed below.

The three jobs below must be assigned to specific people on the entry team and noted on the entry form. The entrant or the attendant may also act as the supervisor; the entrant may not act as the attendant. The following job descriptions are taken from 29 CFR 1910.146(h) through (j).

**Authorized Entrant ± the person(s) entering the confined space**

Know the hazards that may b-11( the 5 BT/F3.75 612.58 Tm(c)4(onm)-13(a)-5(y)20( b-11( t5543.58

Detects the behavioral effects of hazard exposure in an authorized entrant

Detects a situation outside the space that could endanger the entrant

Attendant becomes unable to perform duties required in this section

Warn unauthorized persons that they must stay away from the confined space

Advise unauthorized persons that they must exit immediately if they have entered the permit space, and inform the entrants and supervisor if this occurs

Performs non-entry rescues (retrieval system winch and tripod) as necessary

**Supervisor ± the person responsible for the overall safety and compliance of the entry**

Know the hazard



